

The art of
ARKIVVILMANSA

//////2018.



through the **Lines.**

ARTIST PROFILE.



ARKIV VILMANSA

info@arkivvilmansa.com

www.arkivvilmansa.com

THE ARTIST.

Indonesian artist Arkiv has been painting, illustrating and designing cartoon like figures since 2005. Shortly after finishing his Bachelor degree in Architecture he plunged into the art world citing his love for drawing figures as his inspiration for this change of career path. Arkiv had a strong debut with his first vinyl figurine titled Arkiv Instant. Over the past several years, artist Arkiv Vilmansa's iconic character, 'Arkiv Instant' has made the artist a household name within the lowbrow art and toy culture scene. In his first U.S. solo exhibition, Through the Lines, Arkiv looks to develop his signature image while debuting new characters. As the title suggests, the exhibition is centralized on the theme of overcoming adversity or "rolling with the punches."

In his subsequent shows around South East Asia, such as Reachable Distance in Indonesia or Relics in Philippines, he continues to explore the deep, curvaceous lines and bold, radiant colours that have now become his trademark, while working around themes such as memory and personal growth. Each collection also shows new artistic directions: in previous ones he began digging into more abstracted forms, and in the latest one, titled The Aftermat, he has started to investigate the possibilities of colour gradients.

In the Aftermath, his evolution confronts us clearly such as in the use of a darker background against which his characters are set. This shade was chosen to represent a bleak, desolate world in the aftermath of a great natural disaster, where new, unexpected life forms emerge. Yet throughout the years, the same silliness and complexity in his characters remain. Smiling cartoon flipping you the bird and teddy bears hanging on a rope are just some of the oddities that Arkiv paints with cheery colors and his signature curvy and graphic style. In his future works, it is safe to say that we can expect to see more of his whimsical and comical representations as well as wait for exciting, unpredictable turns.

THE ARTIST.

Reachable Distance marks the evolutionary process of Arkiv Vilmansa, where he reaches artistic landmarks that had previously only beckon from a distance. In his latest solo show, Vilmansa's works display an innate understanding of historical time; as he notes, "These are really the paintings of our generation".

An artwork is a product of its era. Time and place frame the work, sparking its initial idea, nurturing its many transformations until that idea solidifies and turns into form. This spatio-temporal frame implies that the work is a historical being: it is a living being, breathing and vibrating, intimately entwined with the pulsations of its era.

Through experiencing time and place, we make sense of our everyday world, a world full of forgotten images. The everyday is a container filled with overlooked mental images: dreams, memories, reveries. Unlike dreaming, however, daydreams are anchored firmly to the actual: in order to daydream, we must be fully 'awake'. Tied to the real world but goes beyond it, daydreams are both real and unreal. This paradoxical nature of daydreams is its richness. For Arkiv Vilmansa, the creative process begins with daydreaming. It is where his cartoon figures come from, before they inhabit the world of matter: the world of canvases, brushes and paints.

Looking at his paintings, can we still say that daydreams and reveries are mere escapism, incapable of leaving a mark on our everyday world? Vilmansa's works scream 'no'. Escaping the real, journeying to the unreal, only to return to that initial world, daydreams leave powerful impressions that lead Vilmansa to put a dot in that canvas, turn those dots into sinuous lines, and enliven them with bold, brazen colours. From daydreams to matter; from childhood fascination with cartoons to artworks that successfully capture the vitality and surreality of popular culture.

His striking use of non-representational, blocked, flat colours exemplify this. Along with curved lines, these daring colours bring Vilmansa's works together. In these works, colour is the element that fully speaks of the popular culture – especially cartoons – that continues to inspire him. It embodies the classic postmodern adage, that ironic kitsch is an important form of critique, in resisting the idea that art needs to be separated from the world of excessive consumerism and mass culture.

An artwork responds to an era by telling us of the artist's own history. In Vilmansa's paintings, past endeavours as an architect and a graphic designer reveal themselves clearly. The present never stray far away from the past. An earlier interest in vector graphics manifest itself in energetic curves that now signify his style. The visual effect that the trademark curved lines give is a vivid sense of movement: it is as if these birds really are alive, whether it is spreading its wings as in *Break the Night With Colours*, flying in packs as in *The Contenders*, or encountering each other face to face as in *Escape the Nest*. It is the mark of an artist evolving in a significant way, when traces of his past are plainly visible in his current work.

THE ARTIST.

His new use of colour also reflects this evolution. A single image of a butterfly that is rendered in three different colours (Sovereign Wings), and the peacock painted in different shades of grey (Spellbound) – never before seen in Vilmansa's previous works – represent the artist exploring his media. Unlike the other works, these paintings are almost monochromatic save for strategically placed accents of red and pink. This unexpected variation 'lifts' the composition. These paintings also show a shift in Vilmansa's compositional arrangement. Characters are placed in the middle, acting as a definite focal point, achieving an overall sense of formal balance and unity. In addition to this, Spellbound demonstrates Vilmansa's further investigation into Arkiv's character. Here, it appears more sinister, more prone to devilish deeds than the other portrayals, yet it still radiates a whimsical disposition. If evolution is shaped by experimentation, then it is clear that Vilmansa is fast on his way to creative progress. Especially since despite new experimentations, as these new works display, Vilmansa manages to retain distinctive visual characteristics.

Reachable Distance is an impressive achievement, a collection that boldly shows Vilmansa's relationship to time as an artist: the past that shaped him, the present in which he evolves, and the future that he is heading towards. By drawing inspiration from the time that he lives in, Vilmansa takes pride in the era that makes him, which, as his works show, is also an era of his own making.

EXHIBITION PROFILE.

EXHIBITION SOLO.

2016

Luminous Landscape, RUCI Art Space, Jakarta, Indonesia
Imprinted Memories, Vinyl on Vinyl Gallery, Makati, Philippines

2015

January 2015 “Past, Present, Future.” @ Element Art Space, Singapore

2013

September 2013 “Dreaming of Some Space” @ Galerie Lacroix, Paris – France
September 2013 “In A Moment” @ Colony Art Space with Vivi Yip Art Room, Jakarta – Indonesia
December 2013 “Step Into My World” @ Vinyl On Vinyl Art Gallery, Manila – Philippines

2012

August 2012 “The Aftermath” A Journey to Wounderland Tour @ Toy Art Gallery, Los Angeles – USA
November 2012 “Daydreamer” A Journey to Wounderland Tour @ Vivi Yip Art Room, Jakarta – Indonesia
November 2012 “Arkiventures” A Journey to Wounderland Tour @ FLABSLAB Gallery, Singapore
November 2012 “A New Amusement” A Journey to Wounderland Tour @ Publika White Box Gallery, Malaysia
December 2012 “All In The Mind” A Journey To Wounderland Tour @ ViniylOnVinyl Gallery, Manila – Philippines

2011

March 2011 “Through The Lines” @ Vincent Michael Gallery, Philadelphia
August 2011 “Escapist” @ Toy Art Gallery, Los Angeles – USA
October 2011 “Reachable Distance” @ Vivi Yip Art Room, Jakarta – Indonesia
November 2011 “One or Nothing” @ White Canvas Gallery, Singapore
December 2011 “Relics” @ VinylOnVinyl Gallery, Manila – Philippines

2010

October 2010 “Riding Curves” @ Vivi Yip Art Room, Jakarta – Indonesia
December 2010 “Out of Nothing” @ VinylOnVinyl Gallery, Manila – Philippines

ART SHOWS

Sothebys 2013 – Modern and Contemporary Southeast Asian Paintings, Hong Kong
Art Bazaar Jakarta 2013, Jakarta – Indonesia
Sydney Contemporary Art 2013, Sydney – Australia
Art ‘O’ Clock 2013 Paris, La Defense – France
Sovereign Art Asian Prize 2013-2014, Hong Kong
Genoma Contemporary Art, Italy

EXHIBITION GROUP.

2012

January 2012 “Underpaid” Group Show @ Hold Up Art Gallery, Los Angeles – USA
February 2012 “Art On The Move” Auction, Oceanic Awareness Collaboration @ White Walls Gallery, San Fransisco – USA
July 2012 “Bazaar Art Jakarta” @ Pacific Place, Jakarta – Indonesia
August 2012 “Pangeaseed” @ Roqlarue Gallery, Spoke Art Gallery, Lebasse Project Gallery, USA
November 2012 “Neopopstreetpunk 4” Gallery M Squared, Houston – USA

2011

February 2011 Oceanic Awareness Collaboration’s First Annual 2011 @ Andi Campognone Projects, Los Angeles – USA
April 2011 Dreweatts’ Urban Contemporary “Haven House Children’s Hospice” Auction, London – UK
May 2011 “Interstellar” Artist Project by The Howler Terror Club @ Goods Dept, Jakarta – Indonesia
July 2011 “Pressed” A Silkscreen exploration @ Hold Up Art Gallery, Los Angeles – USA
September 2011 Genoma Contemporary @ Venice Biennale, Venice – Italy
October 2011 “Beyondeden” Art Fair, Los Angeles – USA

2010

November 2010 “Art Strikes Back” Art Asylum Boston @ Fourth Wall Gallery, Boston – USA
December 2010 “Multiversal Group Art Show” Art Basel Miami, Miami – USA
December 2010 “Boarded Up” The Art Of Surf and Skate @ Gallery M Squared, Houston – USA

THE ARTWORK.

THEARTWORK.



"Marvelous Dream (Infra red)"

130 x 150 cm / 51 x 59 Inches
Acrylic and ink on canvas

2013



"Marvelous Dream (Yellow)"

130 x 150 cm / 51 x 59 Inches
Acrylic and ink on canvas

2013

2013.

THEARTWORK.



"Bird of prey"

110 x 130 cm / 43 x 51 Inches
Acrylic and ink on canvas

2013



"She is geisha"

140 x 170 cm / 55 x 66 Inches
Acrylic and ink on canvas

2013

2013.

THEARTWORK.



"Black swan"

140 x 170 cm / 55 x 66 Inches
Acrylic and ink on canvas

2013

2013.



"Let it ride"

140 x 170 cm / 55 x 66 Inches
Acrylic and ink on canvas

2013

THEARTWORK.



"There there"

110 x 130 cm / 43 x 51 Inches
Acrylic and ink on canvas

2013

2013.

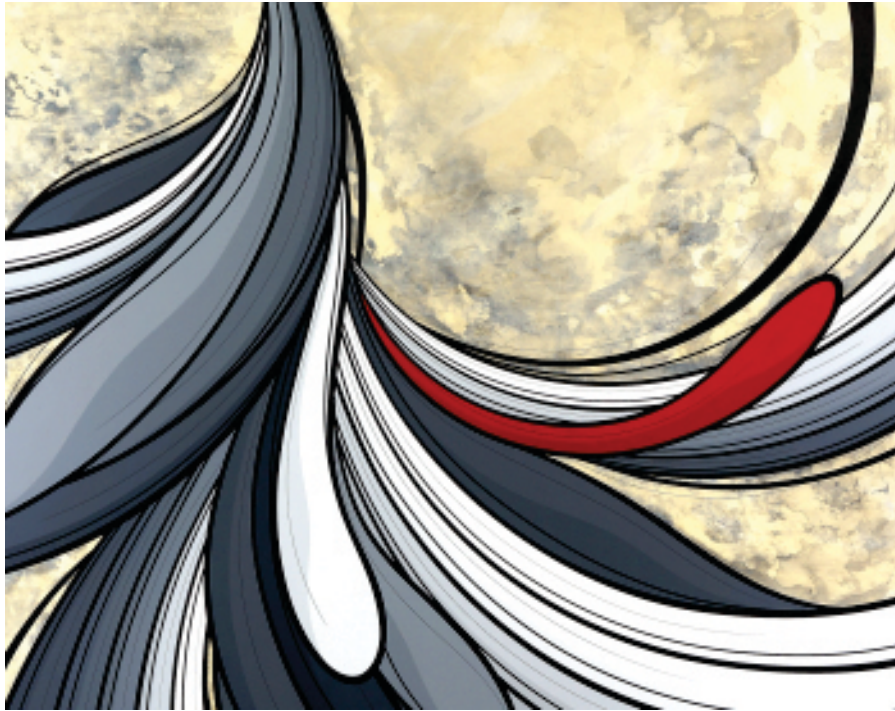


"Parallel lines"

140 x 170 cm / 55 x 66 Inches
Acrylic and ink on canvas

2013

THEARTWORK.



"Agora"

130 x 150 cm / 51 x 59 Inches
Acrylic and ink on canvas

2013



"There's nothing real/unreal"

110 x 130 cm / 43 x 51 Inches
Acrylic and ink on canvas

2013

2013.

THEARTWORK.



"Step into my world"

100 x 120 cm / 39 x 47 Inches
Acrylic and ink on canvas

2012



"Faces in a dream"

100 x 120 cm / 39 x 47 Inches
Acrylic and ink on canvas

2012

2012.

THEARTWORK.



"Daydreamer"

140 x 170 cm / 55 x 66 Inches
Acrylic and ink on canvas

2012

2012.



"Better life since"

140 x 170 cm / 55 x 66 Inches
Acrylic and ink on canvas

2012

THEARTWORK.



"Only ones who know"

140 x 170 cm / 55 x 66 Inches
Acrylic and ink on canvas

2012



"This house is a circus"

140 x 170 cm / 55 x 66 Inches
Acrylic and ink on canvas

2012

2012.

THEARTWORK.



"Stranded"

140 x 170 cm / 55 x 66 Inches
Acrylic and ink on canvas

2011



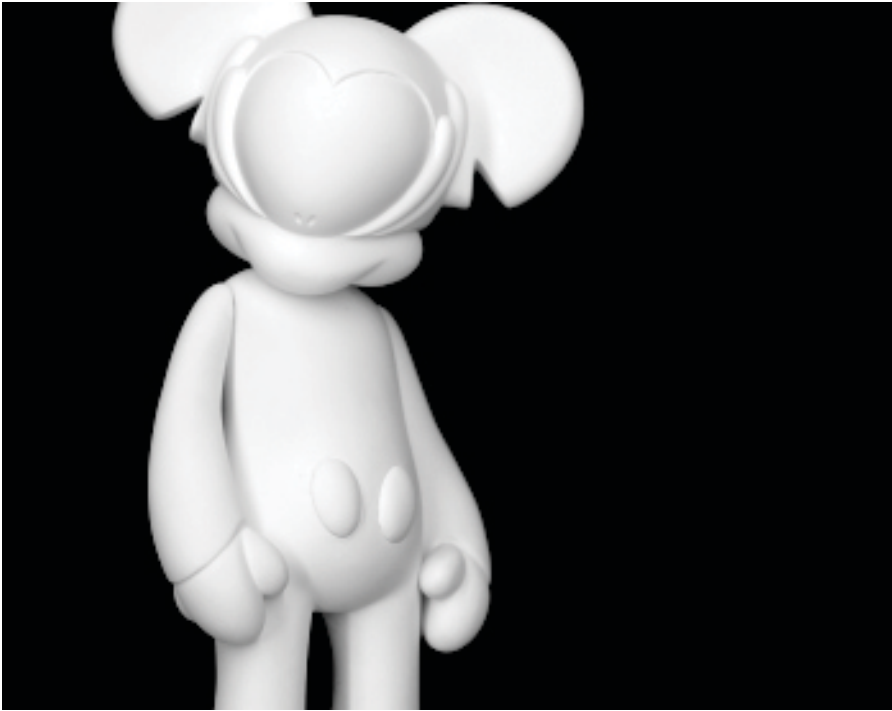
"The hunter"

130 x 150 cm / 51 x 59 Inches
Acrylic and ink on canvas

2011

2011.

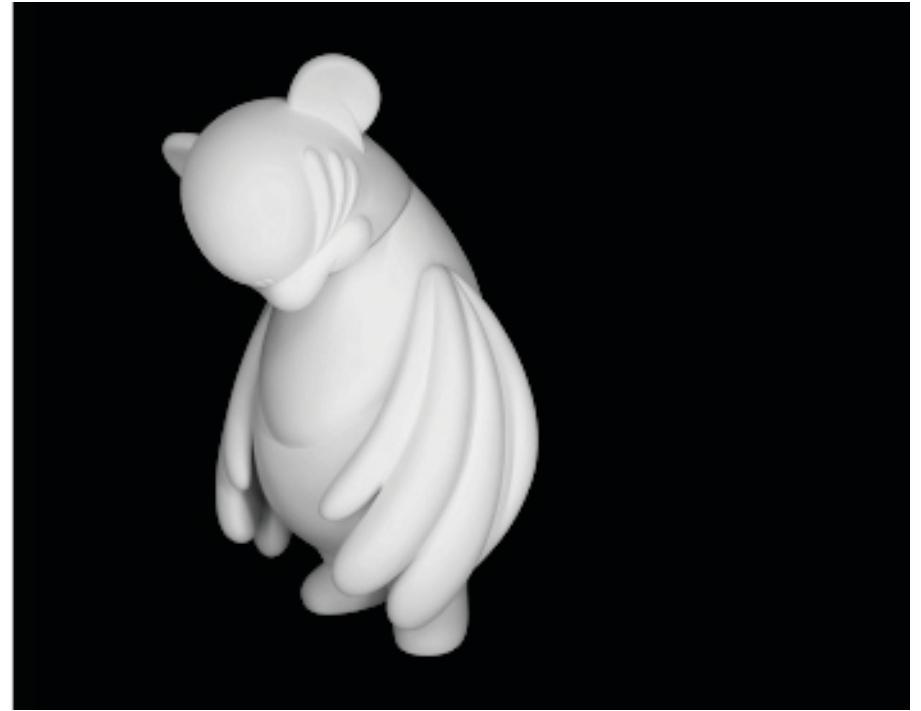
THEARTWORK.



"Mickiv"

8 Inches
Vinyl figure

2013



"Panda"

8 Inches
Vinyl figure

2013

TOYS.

THEARTWORK.



"The Aftermath"

Vans shoes
Acrylic and ink on canvas

2012



"The wonderland"

Vans shoes
Acrylic and ink on canvas

2012

TOYS.

THE EXHIBITION PROFILE.



THE EXHIBITION PROFILE.



THE EXHIBITION PROFILE.



THE EXHIBITION PROFILE.



THANK YOU.